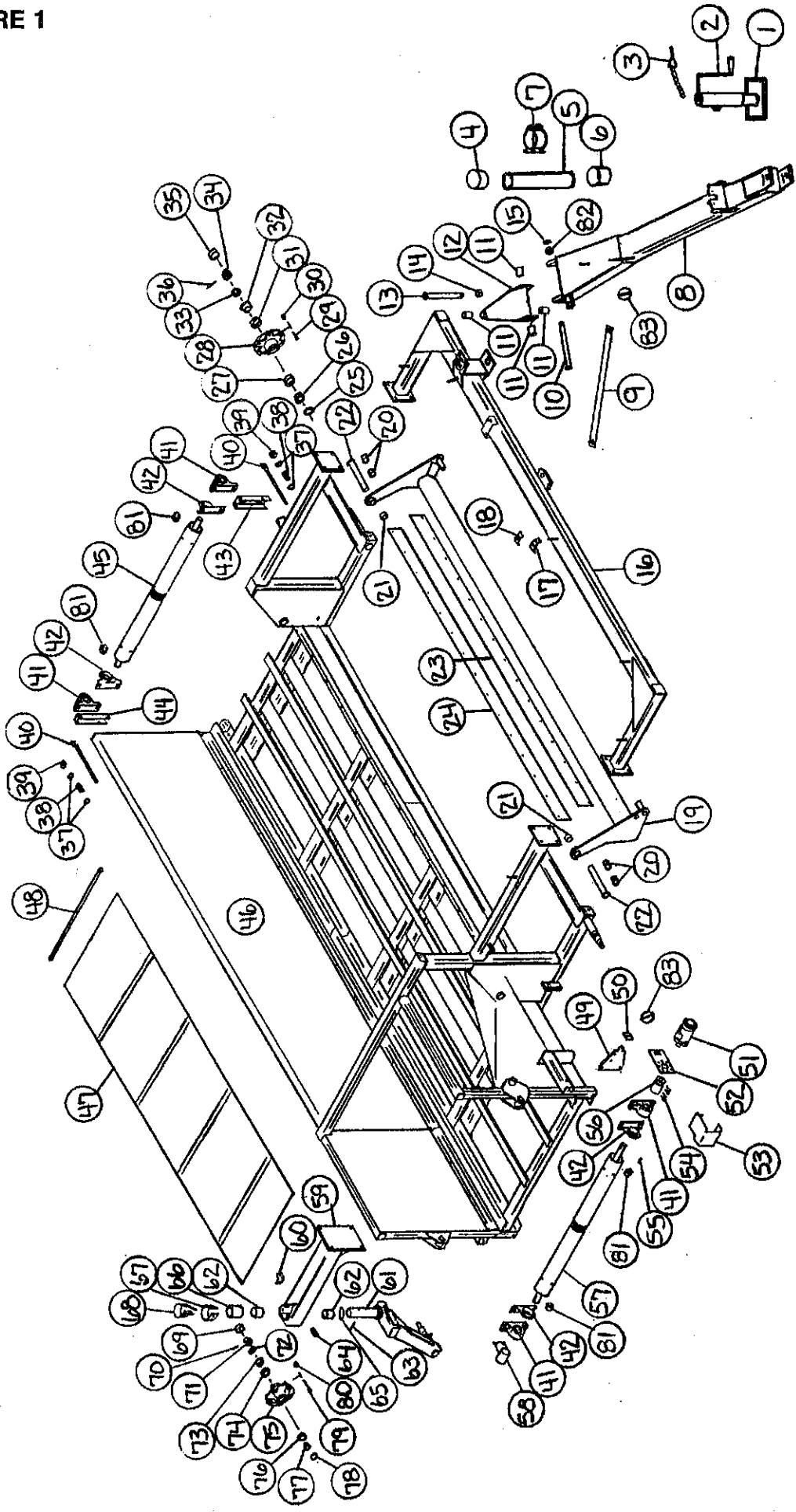


FIGURE 1

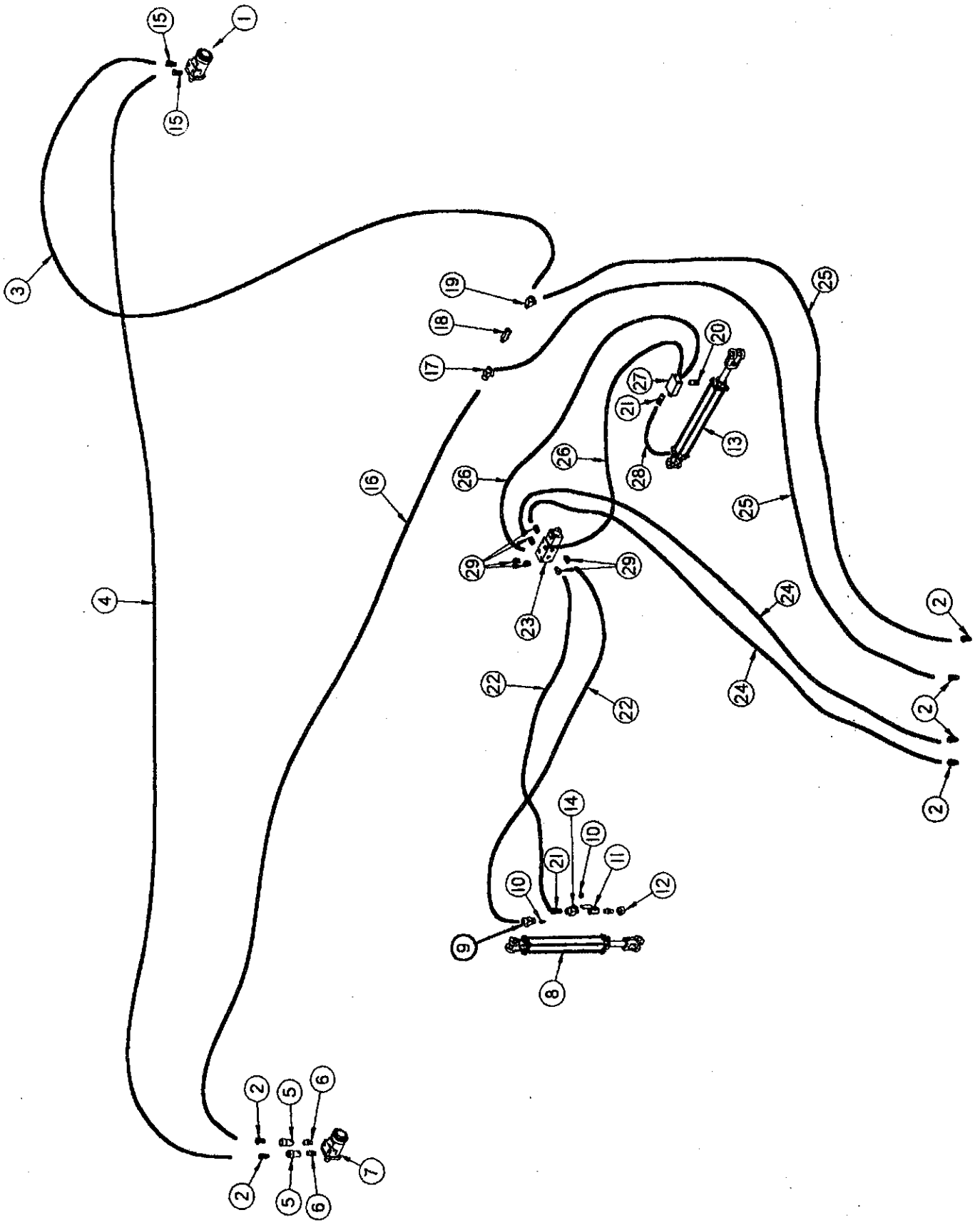


**FIGURE 3
OPTIONAL METAL TOOTH PICKUP**

ITEM	PART NO.	DESCRIPTION	ITEM	PART NO.	DESCRIPTION
1.	DWM6	Right Head Panel	32.	WM180	Side Panel Slot Plate
2.	WM184	Z-Channel	33.	WM187	Bearing Bracket RH
3.	DWM5	Left Head Panel	34.	WM185	PVC Spacer
4.	WM181	Back Roller Drive Shaft	35.	WM29	Bearing
5.	WM219	Poly Slides	36.	WM38A	Splice Wire
6.	DWM8	Gauge Arms	37.	F145	Flange
7.	DWM7	Pivot Pin	38.	F143	Flange (Greaseable)
8.	DWM127	Clevis Pins 1/2" x 5"	39.	WM121	Key 5/16" x 1" Square
9.	DWM226	Right Wind Guard	40.	DWM40	Head Shield
10.	DWM2	Wind Guard Holder	41.	DWM137	Cap Screw-Coupler
11.	WM60	Wind Guard Rods (13)	42.	DWM39	Hydraulic Motor Mount
12.	DWM228	Wind Guard	43.	DWM27	Coupler
13.	WM34	Front Roller	44.	DWM45	Motor Spacer
14.	WM179	Right Roller Adjustment Bracket	45.	WM177	Hydraulic Motor Mount
15.	WM192	Left Roller Adjustment Bracket	46.	WM42	Tooth #4
16.	SWM35	3-Bolt Bearing Assembly	47.	WM41	Tooth #3
17.	WM27	Lock Collar 1-1/4" ID W/Set Screw	48.	WM40	Tooth #2
18.	DWM58	Poly Wind Guard	49.	WM39	Tooth #1
19.	DWM227	Wind Guard Washer	50.	WM196	Pickup Belt Section
20.	SWM55	Cotter Pin 1/4" x 2-1/2"	*	WM194A	Pickup Belt 1/2 Section
21.	CAT135A	Seal	51.	WM35A	Rod, Finger 3/8" OD x 17-3/8"
22.	CAT10	Bearing (2)	52.	WM31	Belt, V
23.	CAT9	Race (2)	*	WM195	1/2 Belt, V
24.	CAT128	Stud	53.	R70	3/16" x 2" Cotter Pin
25.	BFR144	Lug Nut	54.	F56	Lynch Pin
26.	CAT177	Hub-Complete	55.	ES7	Hair Pin
27.	CAT12	Spindle Nut	56.	WM186	Bearing Bracket LH
28.	BFR65	Cotter Pin	57.	WM122	Bottom Roller Scraper
29.	CAT13	Hub Cap	58.	WM15	Wood Bearing (4)
*	SWM17	Wheel (2)	59.	WM11	Pulley, Flat 1" Wide
*	SWM18	Tire 18.5X8.5X8 (2)	60.	WM12	Pulley, V
30.	DWM177	Bolt 1" x 2-1/2" GR.5 Full Thread	61.	WM13	Pulley, Flat 2" Wide
31.	WM218	Washer			

NOTE - *Means Not Shown

FIGURE 4

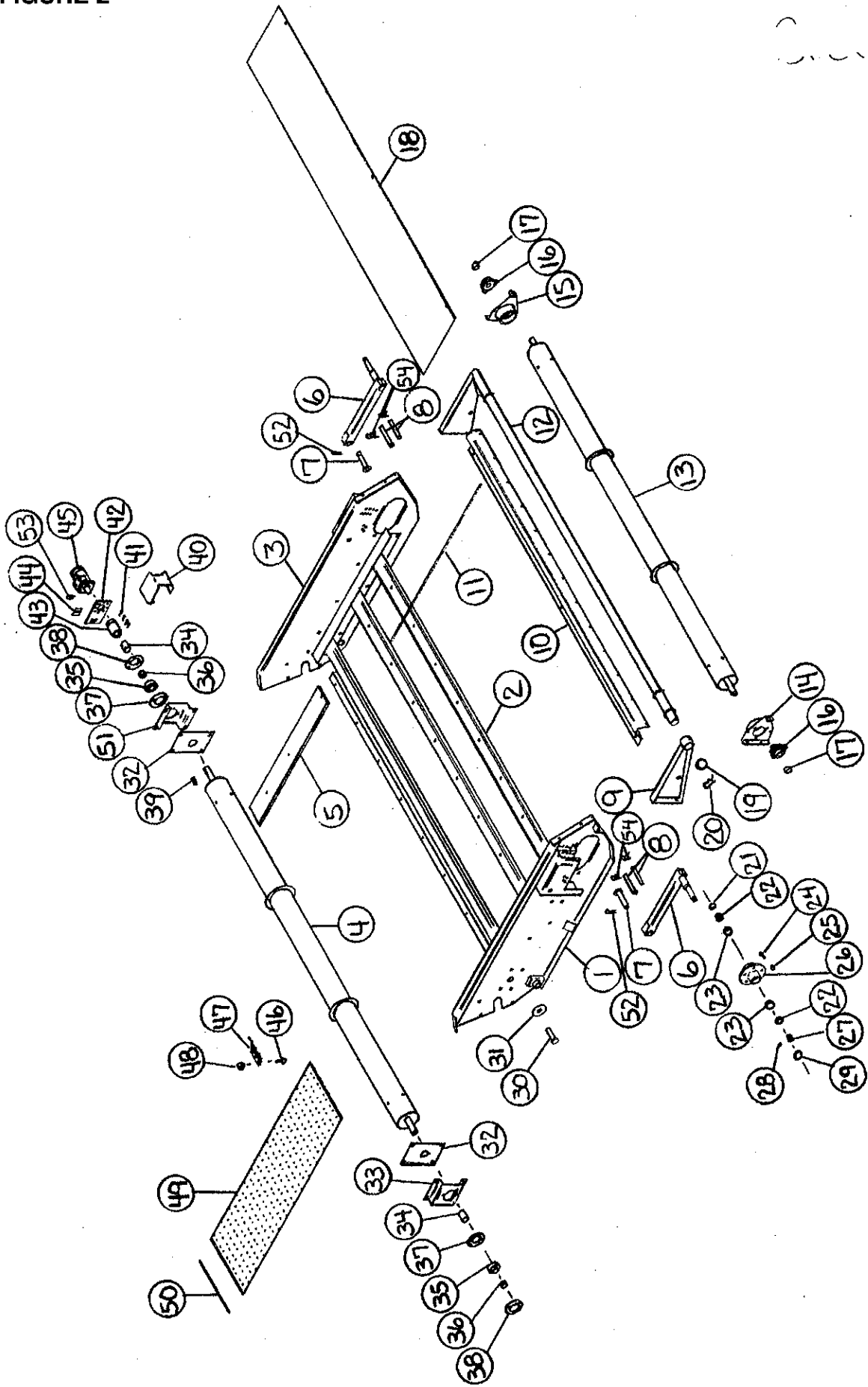


**FIGURE 1
MERGER MAIN FRAME/POLE**

ITEM	PART NO.	DESCRIPTION	ITEM	PART NO.	DESCRIPTION
1.	BFR223	Jack	44.	SWM33	Back Tightener Arm
2.	B17B	Jack Handle	45.	SWM10	Conveyor Roller
3.	BFR4	Jack Pin & Chain	46.	WM229	Main Frame
4.	S414	Cap	47.	WM237	Cross Conveyor Belt
5.	S415	Tube	*	WM238	Cross Conveyor Lacing
6.	S418	Cap W/Hole	48.	WM239	Lacing Pin
7.	S416	Hanger Bracket	49.	DWM51	Male Torque Arm
8.	WM227	Pole	50.	DWM45	Motor Spacer
9.	WM129	Transport Lock	51.	DF1	Hydraulic Motor
10.	RG22	Pole Pin	52.	DWM39	Torque Arm
11.	RG11	Bushing 1"ID x 1-1/4"OD x 2"	53.	DWM42	Right Motor Shield
12.	WM228	Steering Pivot	54.	DWM137	Cap Screw-Coupler
13.	WM231	Queen Pin	55.	WM121	Key 5/16" x 1" Sq.
14.	RG17	Nut-slotted 1"-14 Fullthread	56.	DWM27	Coupler
15.	RG14	Jam Nut 1"-14 Fullthread	57.	SWM11	Drive Roller
16.	WM226	Tongue Cross	58.	DWM31	Shaft Shield
17.	HE42	Hose Bracket	59.	SWM3	Caster Mount
18.	23N67	Hose Bracket Front	60.	WM211	Brake Angle
19.	WM230	Pickup Lifter	61.	SWM2	Caster
20.	RG132	Bushing 1-1/4"ID x 2"	62.	BFR527	Bushing 2"ID x 2-1/4"OD x 2"
21.	SWM30	Spacer	63.	BFR313	Roll Pin 5/16" x 2-3/4"
22.	SWM13	Pin	64.	WM210	Spring-Red
23.	WM235	Skirt Belt	65.	RG24	Bronze Washer 2"ID x 3"OD x 1/8"
24.	WM236	Skirt	66.	DWM59	Brake Bushing
25.	RG98	Seal	67.	WM208	Brake Pad
26.	RG99	Inner Bearing	68.	WM207	Brake Band
27.	RG100	Inner Race	69.	BFR66	Hub Cap
28.	RG101	Hub-6 Bolt	70.	BFR65	Cotter Pin
*	RG128	Tire 9.5 L x 15	71.	BFR64	Nut
*	12N24	Wheel 15 x 8	72.	BFR63	Washer
29.	RG102	Stud Bolt	73.	BFR62	Outer Bearing
30.	BFR144	Stud Nut	74.	BFR61	Outer Race
31.	RG47	Outer Race	75.	BFR60	Hub
32.	RG48	Outer Bearing	*	BFR67	Wheel 15 x 5
33.	RG182	Washer	*	BFR128	Tire 6.70 x 15 SL
34.	RG105	Hub Nut	76.	BFR59	Inner Race
35.	RG103	Hub Cap	77.	BFR58	Inner Bearing
36.	T56	5/32" x 2" Cotter Pin	78.	BFR57	Seal
37.	K68	Washer 1/2"	79.	BFR143	Stud Bolt
38.	DWM125	Spring-Blue	80.	BFR144	Stud Nut
39.	R29	Nut 1/2"	81.	SWM30	Spacer
40.	DWM25	Tightener	82.	RG13	1" Star Washer
41.	DWM132	Pillow Block Bearing	83.	F56	Lynch Pin
42.	DWM36	Anti-Wrap Guard			
43.	SWM34	Tightener Arm			

NOTE - *Means Not Shown

FIGURE 2



**FIGURE 2
MERGER, PLASTIC TOOTH PICK-UP HEAD**

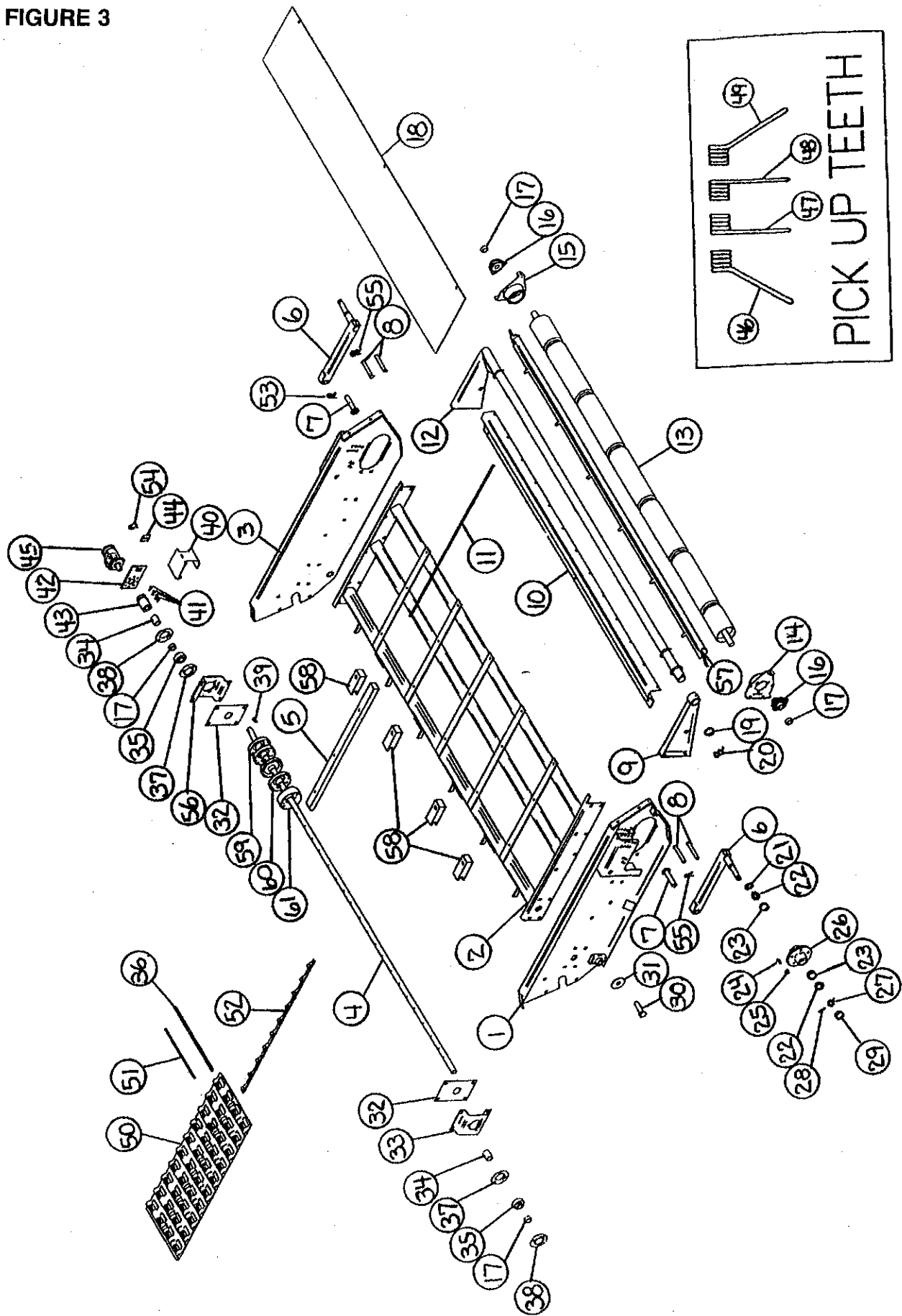
ITEM	PART NO.	DESCRIPTION	ITEM	PART NO.	DESCRIPTION
1.	DWM6	Right Head Panel	*	SWM17	Wheel (2)
2.	WM234	Flat Belt Frame	*	SWM18	Tire 5.70-8 (2)
3.	DWM5	Left Head Panel	30.	DWM177	Bolt 1" x 2-1/2" GR.5 Full Thread
4.	WM232	Head Drive Roller	31.	WM218	Washer
5.	SWM15	Slides (8)	32.	WM180	Side Panel Slot Plate
6.	DWM8	Gauge Arms	33.	WM187	Bearing Bracket RH
7.	DWM7	Pivot Pin	34.	SWM54	Spacer
8.	DWM127	Clevis Pin	35.	WM29	Bearing
9.	DWM226	Right Wind Guard	36.	WM27	Lock Collar
10.	DWM2	Wind Guard Holder	37.	F145	Flange
11.	WM60	Wind Guard Rods (13)	38.	F143	Flange
12.	DWM228	Wind Guard	39.	WM121	Sq. Key 5/16" x 1"
13.	WM233	Front Idler Roller	40.	DWM40	Head Shield
14.	WM179	Right Front Roller Bracket	41.	DWM137	Cap Screw-Coupler
15.	WM192	Left Front Roller Bracket	42.	DWM39	Hydraulic Motor Mount
16.	SWM35	3-Bolt Bearing Assembly	43.	DWM27	Coupler
17.	WM27	Lock Collar	44.	DWM45	Motor Spacer
18.	DWM58	Poly Wind Guard	45.	WM177	Hydraulic Motor
19.	DWM227	Wind Guard Washer	46.	SWM26	1/4" x 3/4" Elevator Bolts (780)
20.	SWM55	Cotter Pin 1/4" x 2-1/2"	47.	SWM1	Pickup Teeth (390)
21.	CAT135A	Seal	48.	SWM27	1/4 Keps Lock Nuts (780)
22.	CAT10	Bearing (2)	49.	SWM21	Pickup Belts (3) <i>Swm 56 / 57</i>
23.	CAT9	Race (2)	50.	SWM41	Lacing Pin
24.	CAT128	Stud	51.	WM186	Bearing Bracket LH
25.	BFR144	Lug Nut	52.	R70	3/16" x 2" Cotter Pin
26.	CAT177	Hub-Complete	53.	F56	Lynch Pin
27.	CAT12	Spindle Nut	54.	ES7	Hair Pin
28.	BFR65	Cotter Pin			
29.	CAT13	Hub Cap			

NOTE: *Means Not Shown

Swm 56

SWM57 Belt COMPLETE

FIGURE 3



**FIGURE 4
MERGER HYDRAULICS**

ITEM	PART NO.	DESCRIPTION
1.	WM177	Hydraulic Motor
2.	DWM205	Male Coupler
3.	WM255	Hose 1/2" x 84"
4.	WM173	Hose 1/2" x 294"
5.	DWM206	Female Coupler
6.	WM141	1/2" Nipple Nut
7.	DF1	Hydraulic Motor
8.	BFR69A	2" x 8" Cylinder
9.	WM146	1/2" Male/Female Tee
10.	WM147	Pipe Plug 3/8"
11.	16SV338	3/8" Ball Valve
12.	23N234	3/8" Street Elbow
13.	12V116A	2" x 16" Cylinder
14.	23N116	1/2" Service Tee
15.	LW174	1/2" Union Adapter
16.	WM256	Hose 1/2" x 208"
17.	DF8	1/2" Tee
18.	DF18	1/2" Check Valve
19.	16SV352	1/2" Service Tee
20.	BFR188	3/8" Nipple Nut
21.	T244	Adapter Union W/.042" Orifice
*	BFR122	Adapter Union
*	DWM250	Orifice .042
22.	WM257	Hose 1/4" x 140"
23.	16SV247	Waterman Valve
24.	WM258	Hose 1/4" x 164"
25.	WM259	Hose 1/2" x 164"
26.	WM260	Hose 1/4" x 24"
27.	WM176	Pole Lock Valve
28.	BFR315	Hose 1/4" x 20"
29.	WM148	Female Adapters

NOTE: * Means Not Shown

FIGURE 5

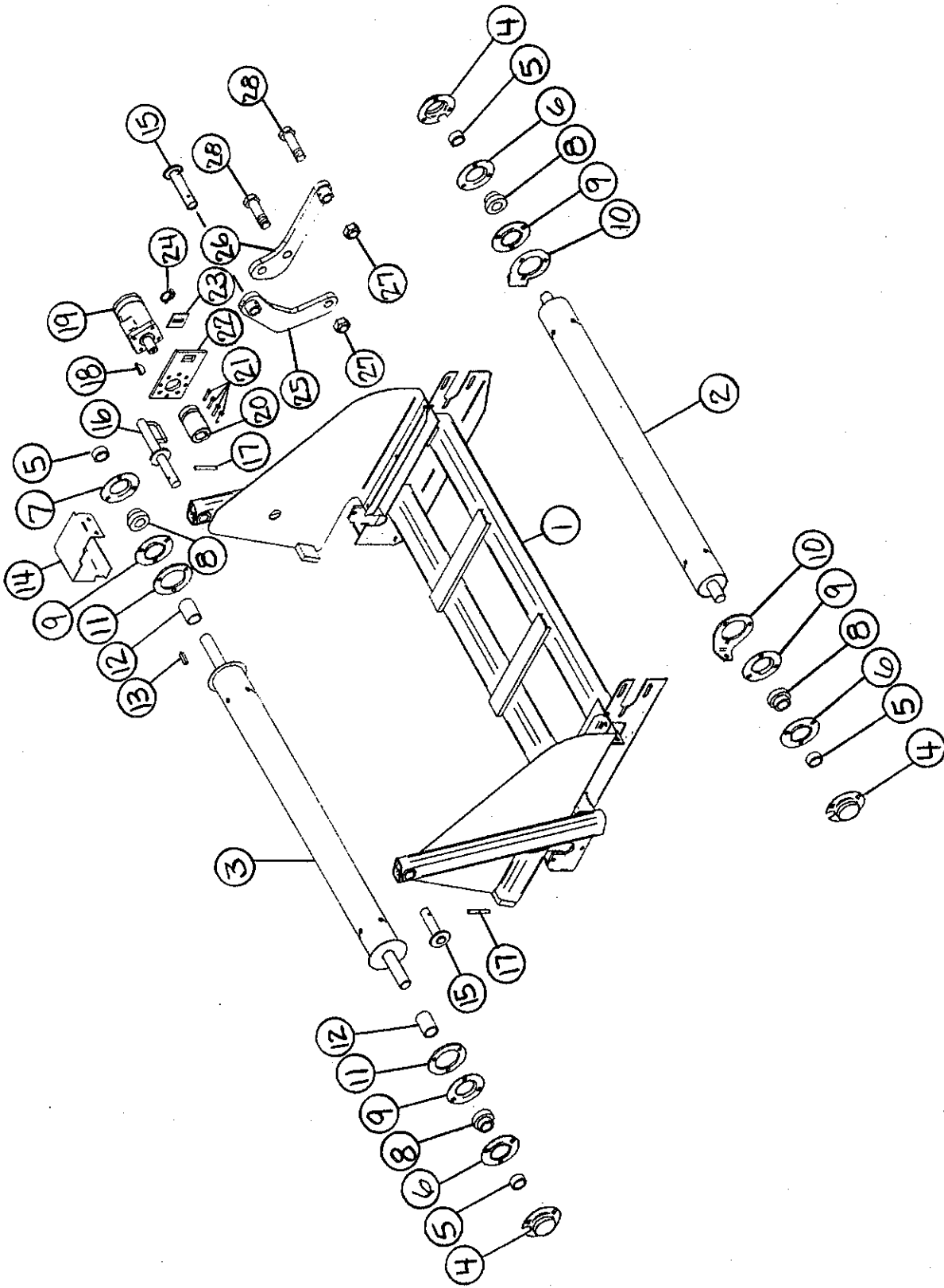
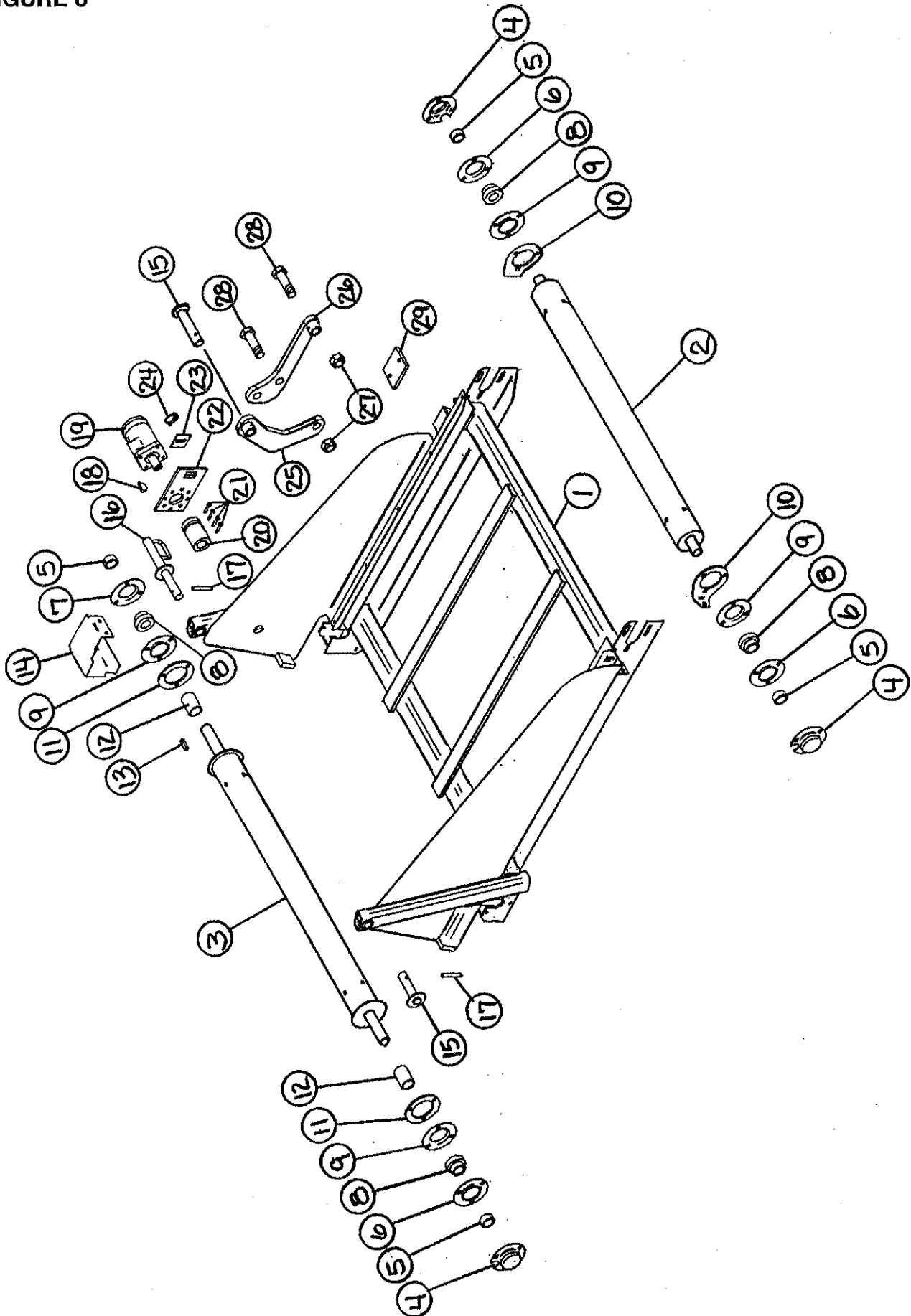


FIGURE 5
MERGER - 2 FT. EXTENSION

ITEM	PART NO.	DESCRIPTION
1.	WM240	2' Extension Frame
2.	WM244	Tightener Roller
3.	WM243	Drive Roller
4.	F95	Bearing Shield
5.	F16	Lock Collar
6.	F114	Flange W/Straight Zerk
7.	F114A	Flange W/45 Degree Zerk
8.	F115	Bearing
9.	F14	Flange
10.	WM250	Flange Tightener
11.	23N174	Flange Spacer
12.	WM136	Ext. PVC Shield
13.	WM121	Sq. Key 5/16" x 1"
14.	WM249	Motor Shield
15.	WM245	Extension Pivot Pin
16.	WM248	Extension Pivot Pin Front
17.	3G22	Expansion Pin 5/16" x 1-3/4"
18.	5B10	Woodruff Key 1/4" x 1"
19.	DF1	Hydraulic Motor
20.	DWM27	Coupler
21.	DWM137	Socket Head Cap Screw
22.	DWM39	Torque Arm
23.	DWM45	Motor Spacer
24.	F56	Lynch Pin
25.	WM246	Long Link
26.	WM247	Short Link
27.	BFR178	1" Lock Nut
28.	BFR545	Bolt 1" x 3-1/2" GR.5
*	WM252	2' Extension Belt
*	SWM37	Lacing Pin
*	SWM38	Lacing-Cross Conveyor

NOTE: * Means Not Shown

FIGURE 6



**FIGURE 6
MERGER - 4 FT. EXTENSION**

ITEM	PART NO.	DESCRIPTION
1.	WM241	4' Extension Frame
2.	WM244	Tightener Roller
3.	WM243	Drive Roller
4.	F95	Bearing Shield
5.	F16	Lock Collar
6.	F114	Flange W/Straight Zerk
7.	F114A	Flange W/45 Degree Zerk
8.	F115	Bearing
9.	F14	Flange
10.	WM250	Flange Tightener
11.	23N174	Flange Spacer
12.	WM136	Ext. PVC Shield
13.	WM121	Sq. Key 5/16" x 1"
14.	WM249	Motor Shield
15.	WM245	Extension Pivot Pin
16.	WM248	Extension Pivot Pin Front
17.	3G22	Expansion Pin 5/16" x 1-3/4"
18.	5B10	Woodruff Key 1/4" x 1"
19.	DF1	Hydraulic Motor
20.	DWM27	Coupler
21.	DWM137	Socket Head Cap Screw
22.	DWM39	Torque Arm
23.	DWM45	Motor Spacer
24.	F56	Lynch Pin
25.	WM246	Long Link
26.	WM247	Short Link
27.	BFR178	1" Lock Nut
28.	BFR545	Bolt 1" x 3-1/2" GR.5
29.	WM251	Rubber Bumper
*	WM253	4' Extension Belt
*	SWM37	Lacing Pin
*	SWM38	Lacing-Cross Conveyor

NOTE: * Means Not Shown

FIGURE 7

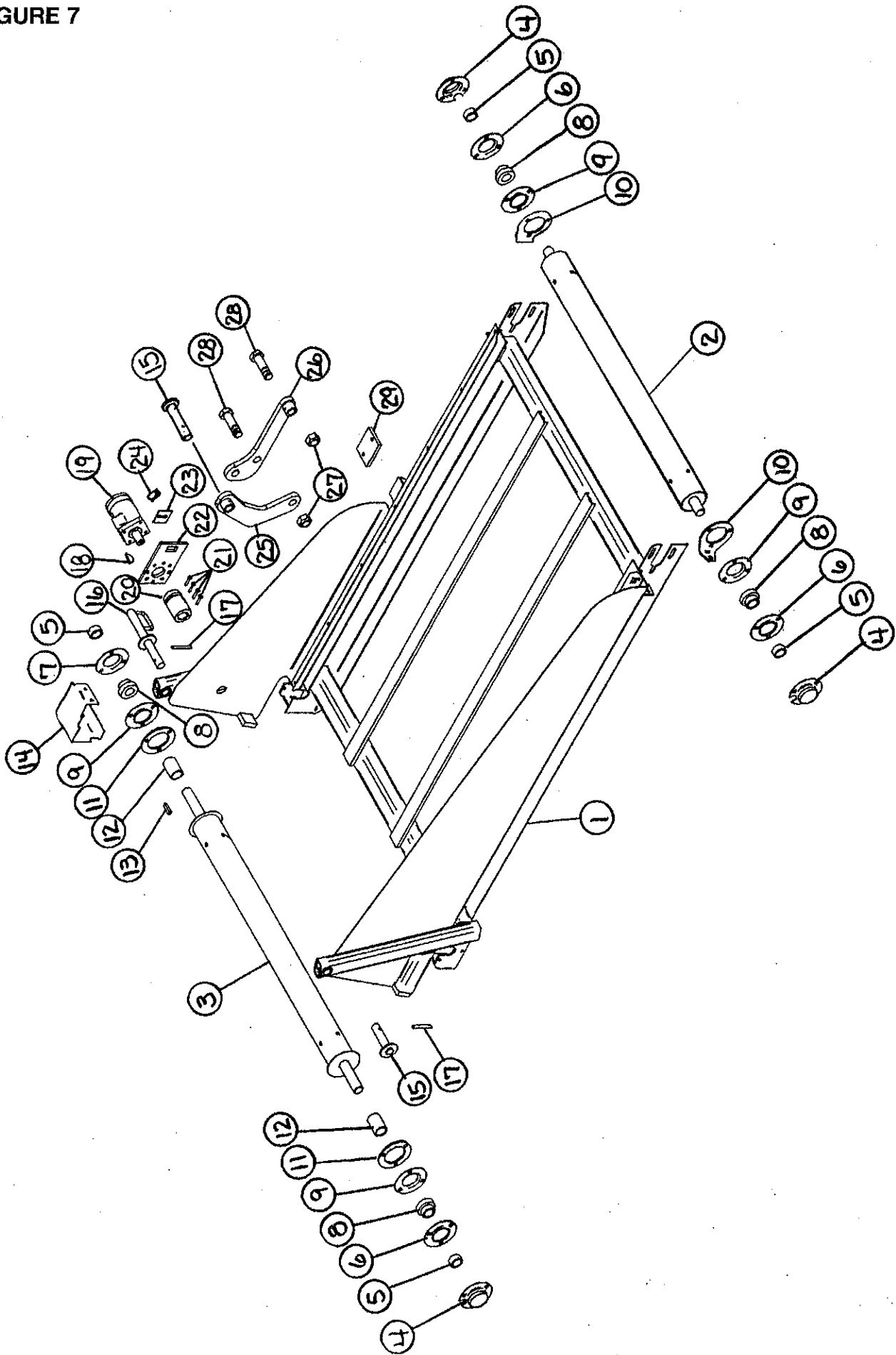


FIGURE 7
MERGER - 6 FT. EXTENSION

ITEM	PART NO.	DESCRIPTION
1.	WM242	6' Extension Frame
2.	WM244	Tightener Roller
3.	WM243	Drive Roller
4.	F95	Bearing Shield
5.	F16	Lock Collar
6.	F114	Flange W/Straight Zerk
7.	F114A	Flange W/45 Degree Zerk
8.	F115	Bearing
9.	F14	Flange
10.	WM250	Flange Tightener
11.	23N174	Flange Spacer
12.	WM136	Ext. PVC Shield
13.	WM121	Sq. Key 5/16" x 1"
14.	WM249	Motor Shield
15.	WM245	Extension Pivot Pin
16.	WM248	Extension Pivot Pin Front
17.	3G22	Expansion Pin 5/16" x 1-3/4"
18.	5B10	Woodruff Key 1/4" x 1"
19.	DF1	Hydraulic Motor
20.	DWM27	Coupler
21.	DWM137	Socket Head Cap Screw
22.	DWM39	Torque Arm
23.	DWM45	Motor Spacer
24.	F56	Lynch Pin
25.	WM246	Long Link
26.	WM247	Short Link
27.	BFR178	1" Lock Nut
28.	BFR545	Bolt 1" x 3-1/2" GR.5
29.	WM251	Rubber Bumper
*	WM254	6' Extension Belt
*	SWM37	Lacing Pin
*	SWM38	Lacing-Cross Conveyor

NOTE: * Means Not Shown

FIGURE 8

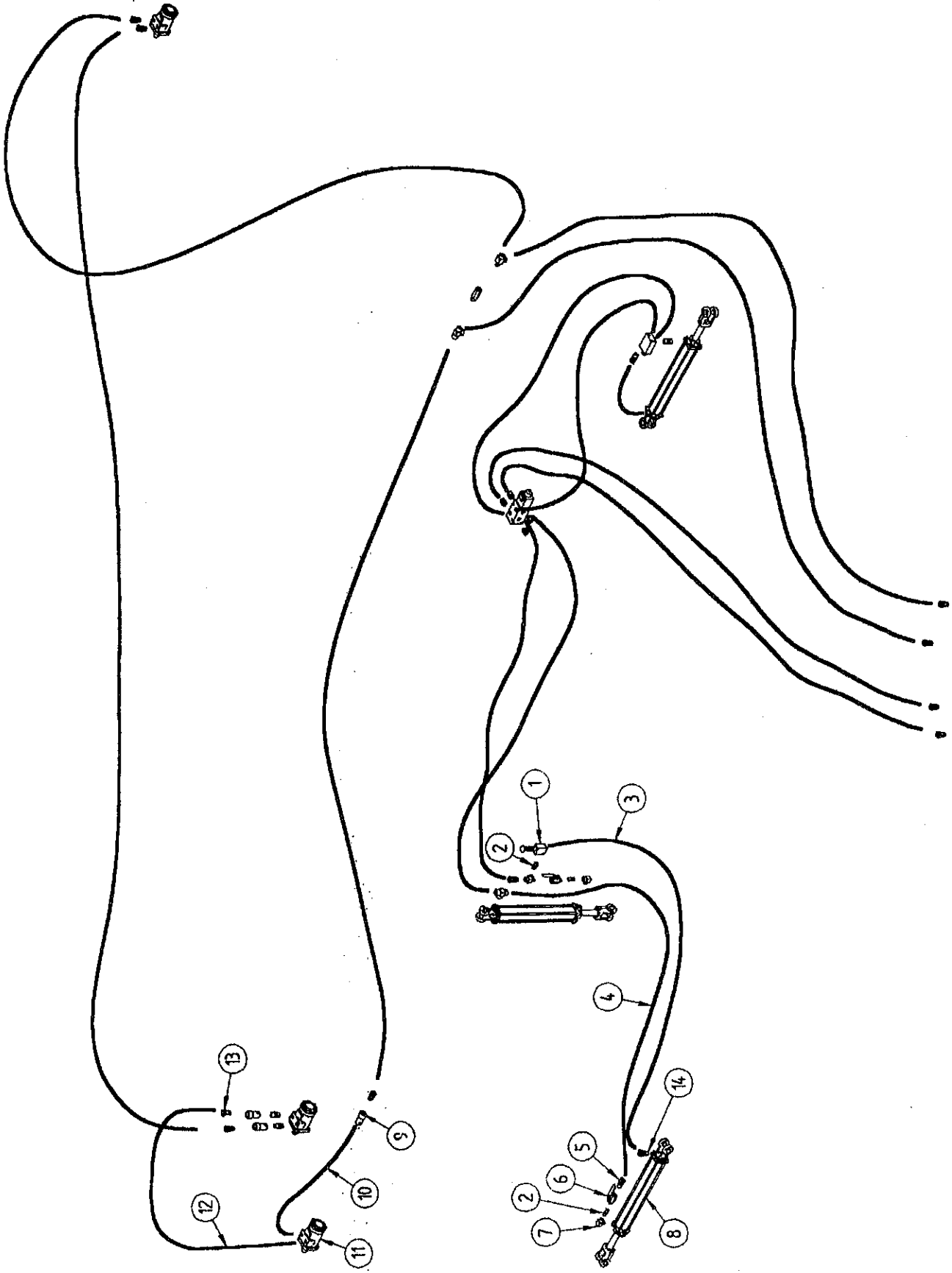


FIGURE 8
MERGER - 2-4-6 FT. EXTENSION HYDRAULICS

ITEM	PART NO.	DESCRIPTION
1.	16SV339	Sequence Valve
2.	BFR188	3/8" Nipple Nut
3.	WM261	Hose 1/4" x 24"
4.	WM262	Hose 1/4" x 40"
5.	T244	3/8" Union Adapter W/.042" Orifice
6.	16SV338	3/8" Ball Valve
7.	23N234	3/8" Street Elbow
8.	23N111A	Extension Cylinder
9.	DWM206	Female Coupler
10.	WM263	Hose 1/2" x 24"
11.	DF1	Hydraulic Motor
12.	WM264	Hose 1/2" x 40"
13.	DWM205	Male Coupler
14.	DWM233	3/8" Adapter Union

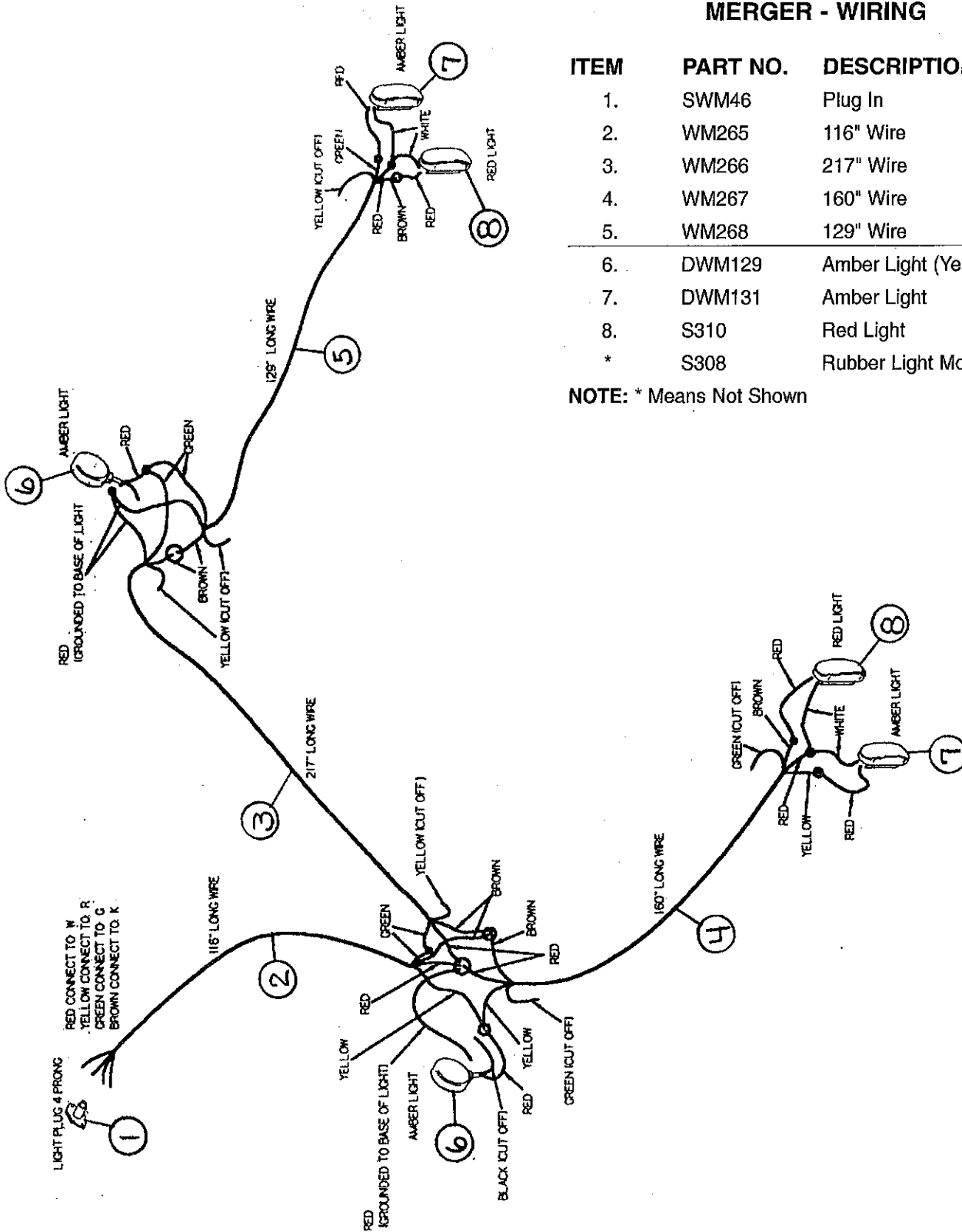
* Parts that are not numbered are used on standard hydraulics (See Figure 3)

NOTE: * (Means Not Shown)

**FIGURE 9
MERGER - WIRING**

ITEM	PART NO.	DESCRIPTION
1.	SWM46	Plug In
2.	WM265	116" Wire
3.	WM266	217" Wire
4.	WM267	160" Wire
5.	WM268	129" Wire
6.	DWM129	Amber Light (Yellow Hazard)
7.	DWM131	Amber Light
8.	S310	Red Light
*	S308	Rubber Light Mount

NOTE: * Means Not Shown



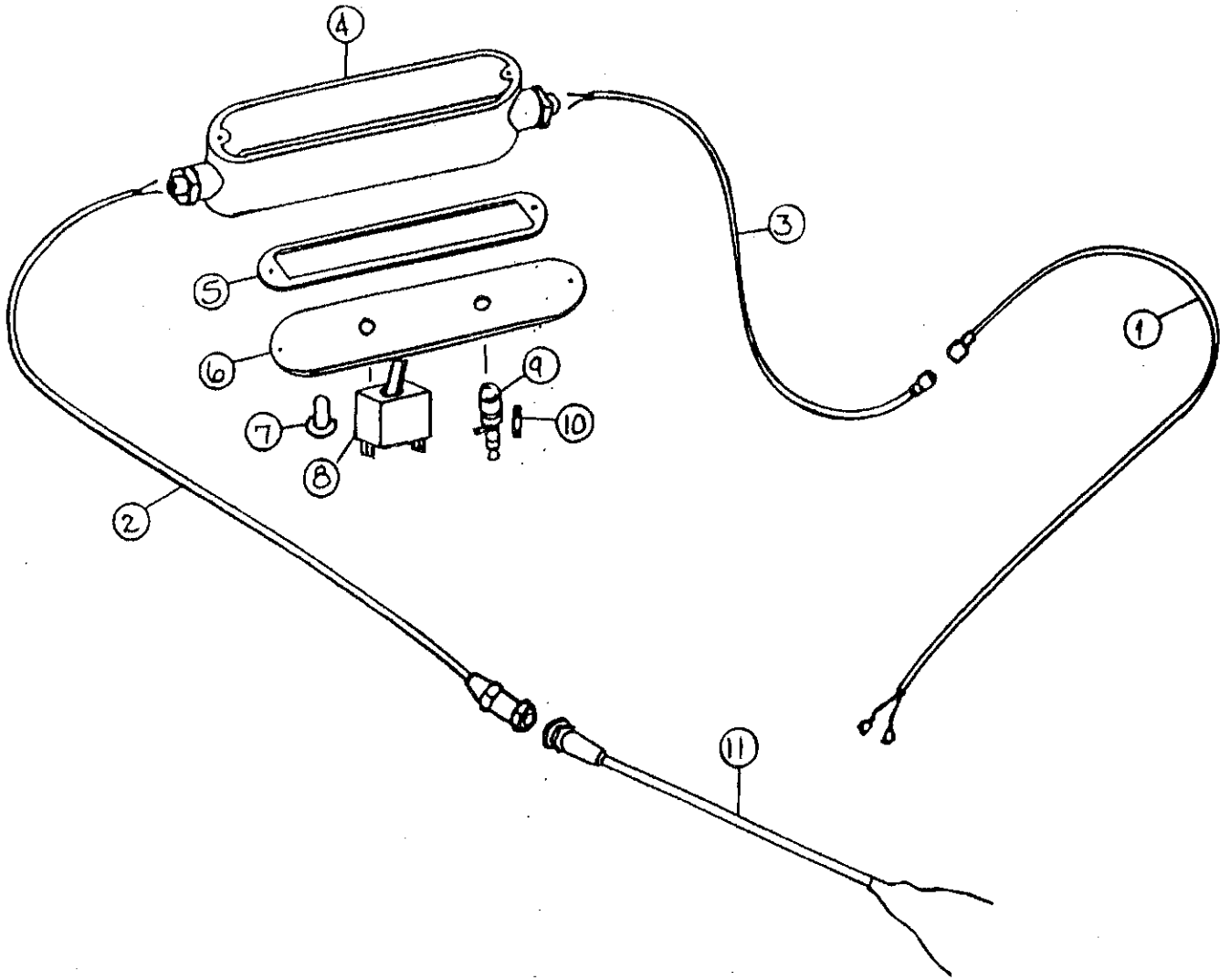


FIGURE 10
MERGER - ELECTRIC CONTROL BOX

ITEM	PART NO.	DESCRIPTION
1.	WM108	Merger Power Supply Cord W/Ends
2.	16SV271	Control Box Power Supply W/Plug in Slots
3.	16SV270	Tractor Power Supply W/Pins
4.	16SV316	Control Box
5.	16SV317	Control Box Gasket
6.	16SV318	Control Box Cover
7.	16SV235	Switch Boot
8.	WM109	Pole / Pickup Switch
9.	16SV231	Fuse Folder
10.	16SV232	Fuse
11.	16SV269	Tractor Control Cord
*	WM110	Control Box Complete

NOTE: * Means Not Shown

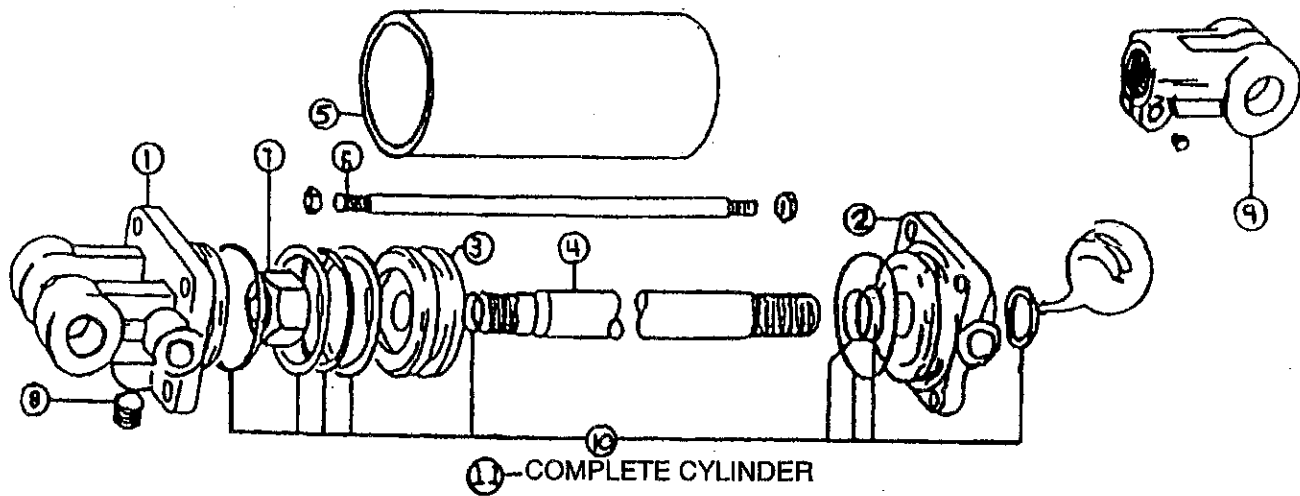


FIGURE 11
PICKUP - HYDRAULIC CYLINDER 8"

ITEM	PART NO.	DESCRIPTION
1.	23N142A	Clevis
2.	23N143A	Rod Cap
3.	23N144	Piston
4.	T134A	Rod
5.	BFR68	Cylinder Tube
6.	T186	Tie Rod
7.	23N148	Piston Nut
8.	23N149	Plug
9.	23N150A	Rod Clevis
10.	23N151	Seal Kit
11.	BFR69A	Complete Cylinder

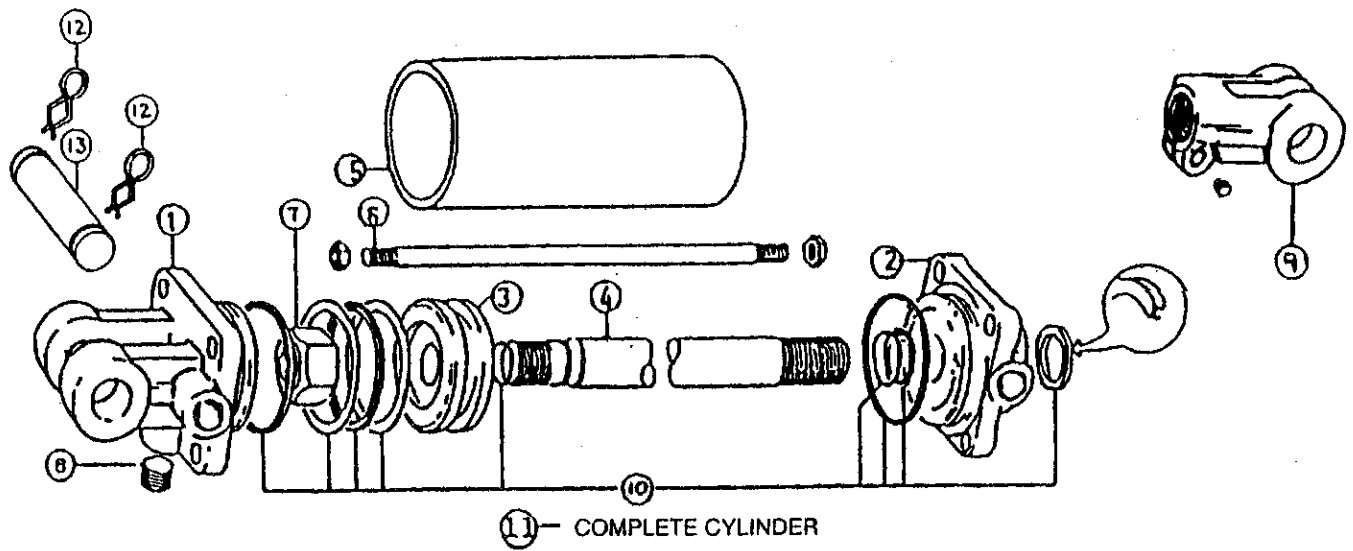


FIGURE 12
POLE - HYDRAULIC CYLINDER 16"

ITEM	PART NO.	DESCRIPTION
1.	23N142A	Clevis Cap
2.	23N143A	Rod Cap
3.	23N144	Piston
4.	23N145A	Rod
5.	23N146	Cylinder Tube
6.	23N147	Tie Rod
7.	23N148	Piston Nut
8.	23N149	Plug
9.	23N150A	Rod Clevis
10.	23N151	Seal Kit
11.	12V116A	Complete Cylinder
12.	T144	Clip Pin
13.	T143	Hydraulic Cylinder Pin

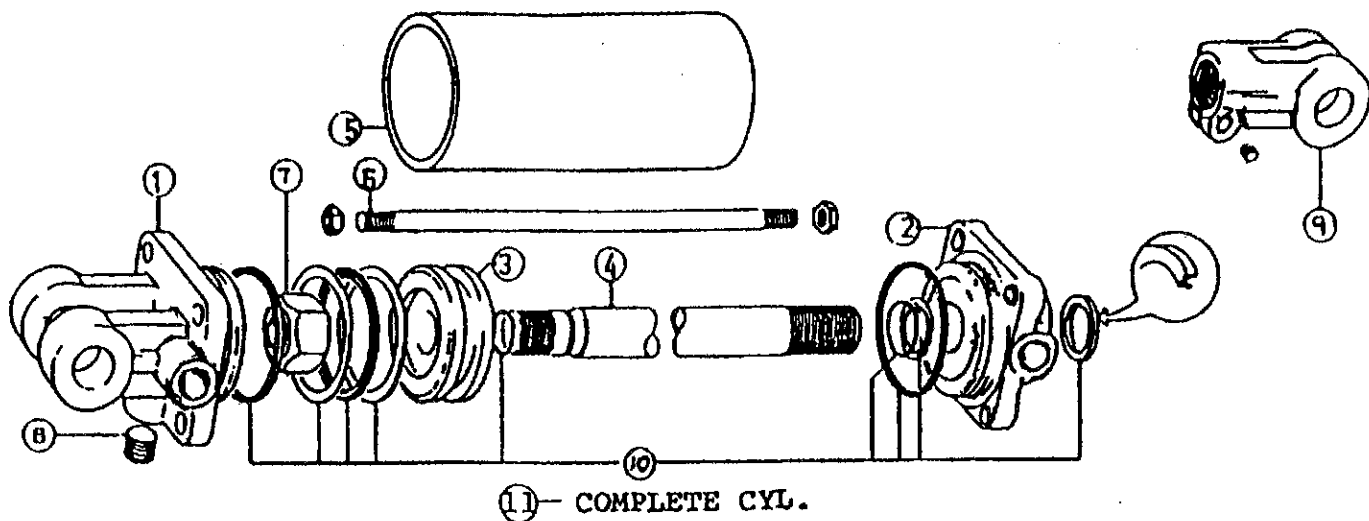


FIGURE 13
OPTIONAL EXTENSION HYDRAULIC CYLINDER

ITEM	PART NO.	DESCRIPTION
1.	23N142A	Clevis Cap
2.	23N143A	Rod Cap
3.	23N144	Piston
4.	23N145A	Rod
5.	23N146	Cylinder Tube
6.	23N147	Tie Rod
7.	23N148	Piston Nut
8.	23N149	Plug
9.	23N150A	Rod Clevis
10.	23N151	Seal Kit
11.	23N111A	Hydraulic Cylinder

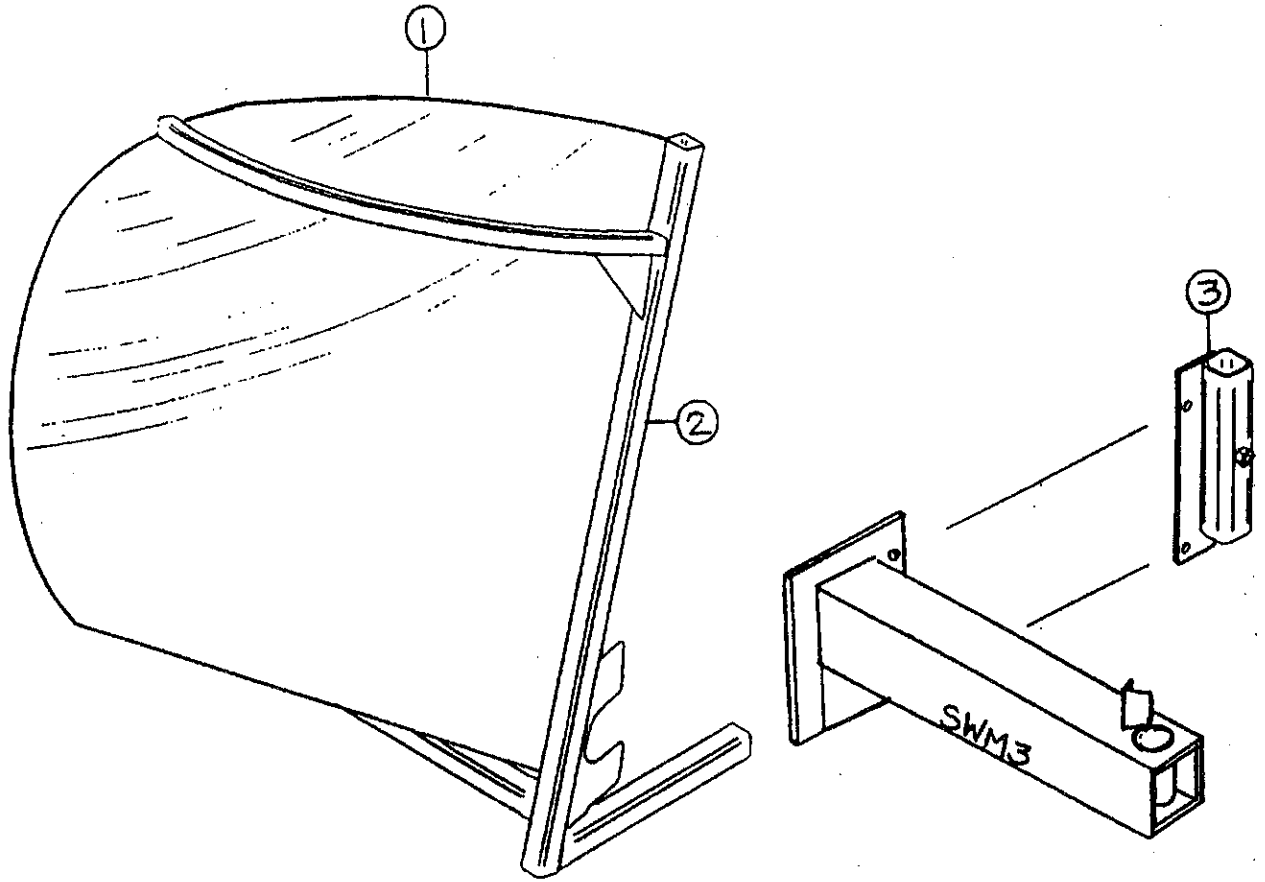


FIGURE 14
MERGER - OPTIONAL WINDROW INVERTER

ITEM	PART NO.	DESCRIPTION
1.	SWM50	Windrow Inverter Poly
2.	SWM51	Windrow Inverter Frame
3.	SWM52	Storage Mount

(NOTE: Storage Mount Bolts onto SWM3 Castor Mount - See Figure 1)

- SERVICE NOTES -

Lined area for service notes.